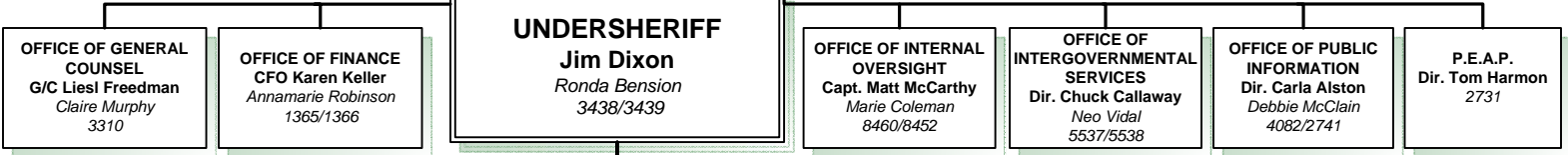




OFFICE OF THE SHERIFF
Douglas C. Gillespie
Connie Gandulla
 3231/3232



LAW ENFORCEMENT SERVICES GROUP
A/S Joseph Lombardo
Donna Thornton
 8380

HOMELAND SECURITY and LAW ENFORCEMENT INVESTIGATIONS GROUP
A/S Kevin McMahon
Kathy Hawkins
 1526/1523

